

M. piriformis

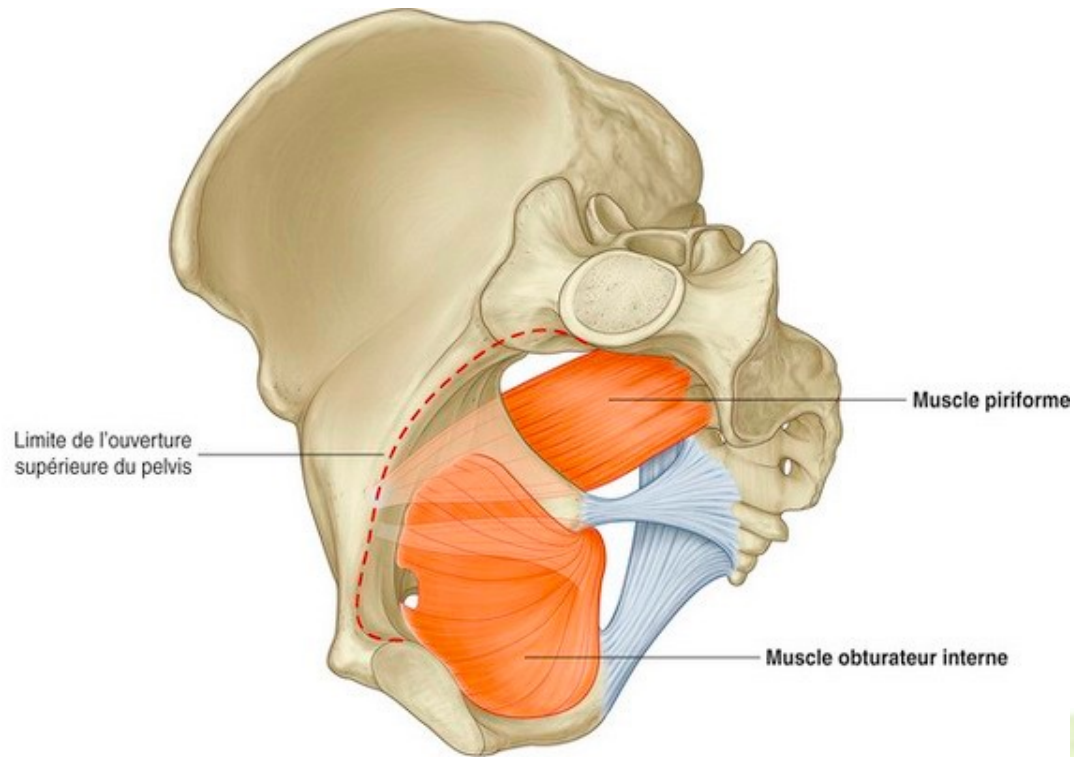
N. ischiadicus and/or N. musculi piriformis (Plexus sacralis)



O: Laterally and between the Foramina sacralia pelvica (3.-5. sacral segment) of the Facies pelvica of the Os sacrum, Incisura ischiadica major close to the Os sacrum

I: Inner surface of the tip of the Trochanter major

F: Hip joint: lateral rotation, extension, abduction



Muscle obturateur interne

M. obturatorius internus

N. musculi obturatorii interni and Rr. musculares (Plexus sacralis)



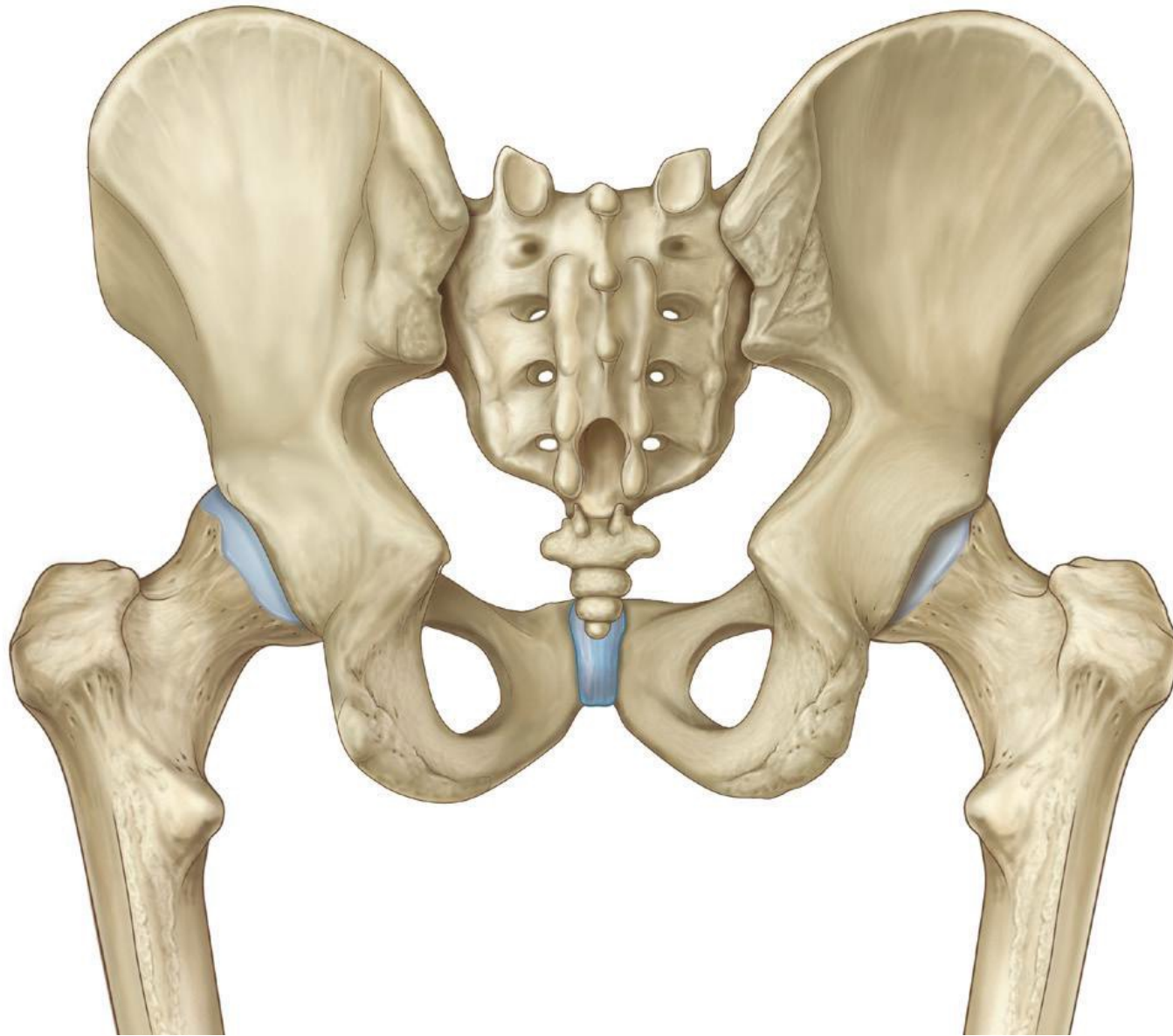
O: Circumference of the Foramen obturatum, medial surface of the Membrana obturatoria

Pourtour du foramen obturé
Face médiale de la membrane obturatrice

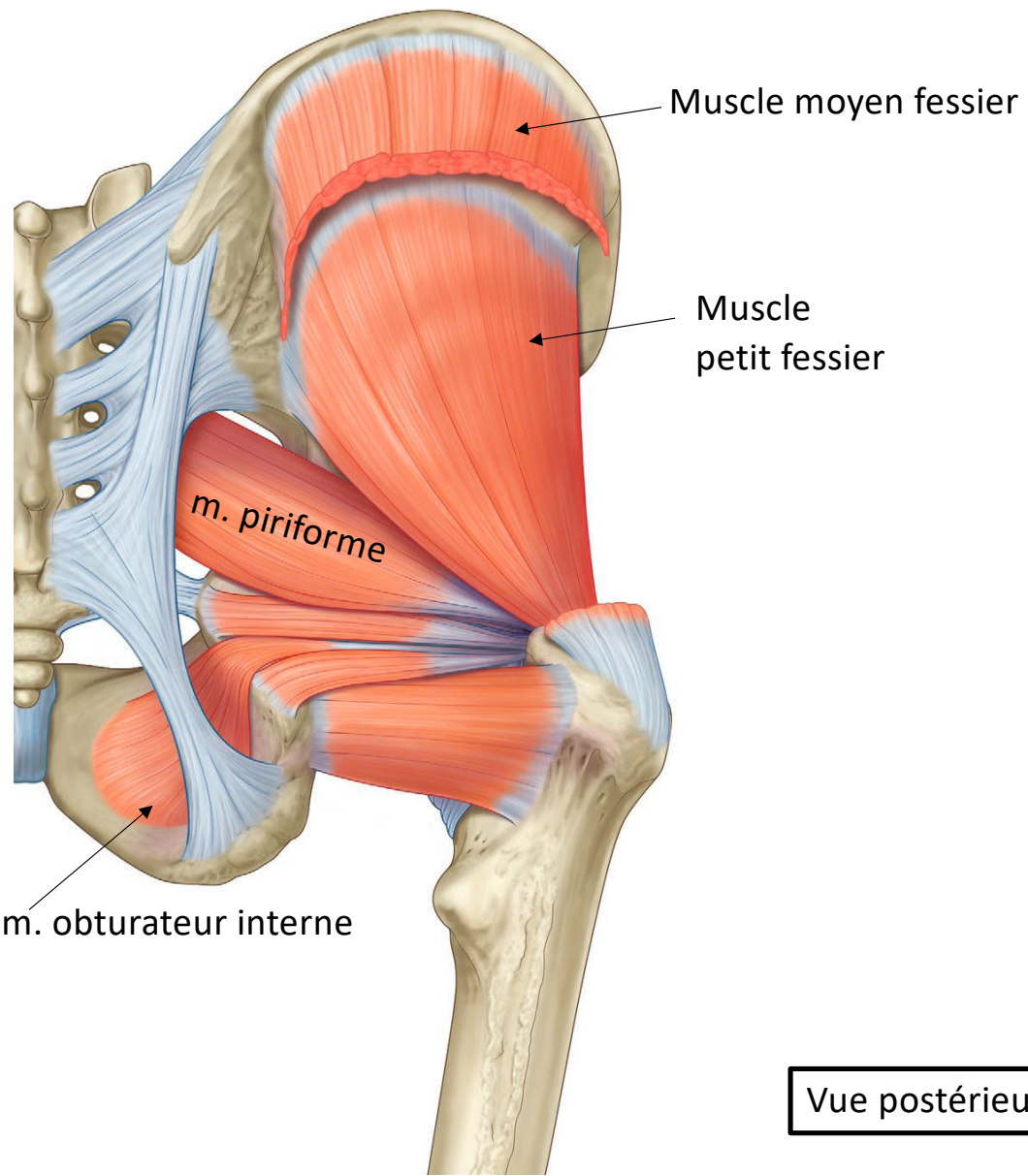
I: Fossa trochanterica

Fosse du grand trochanter

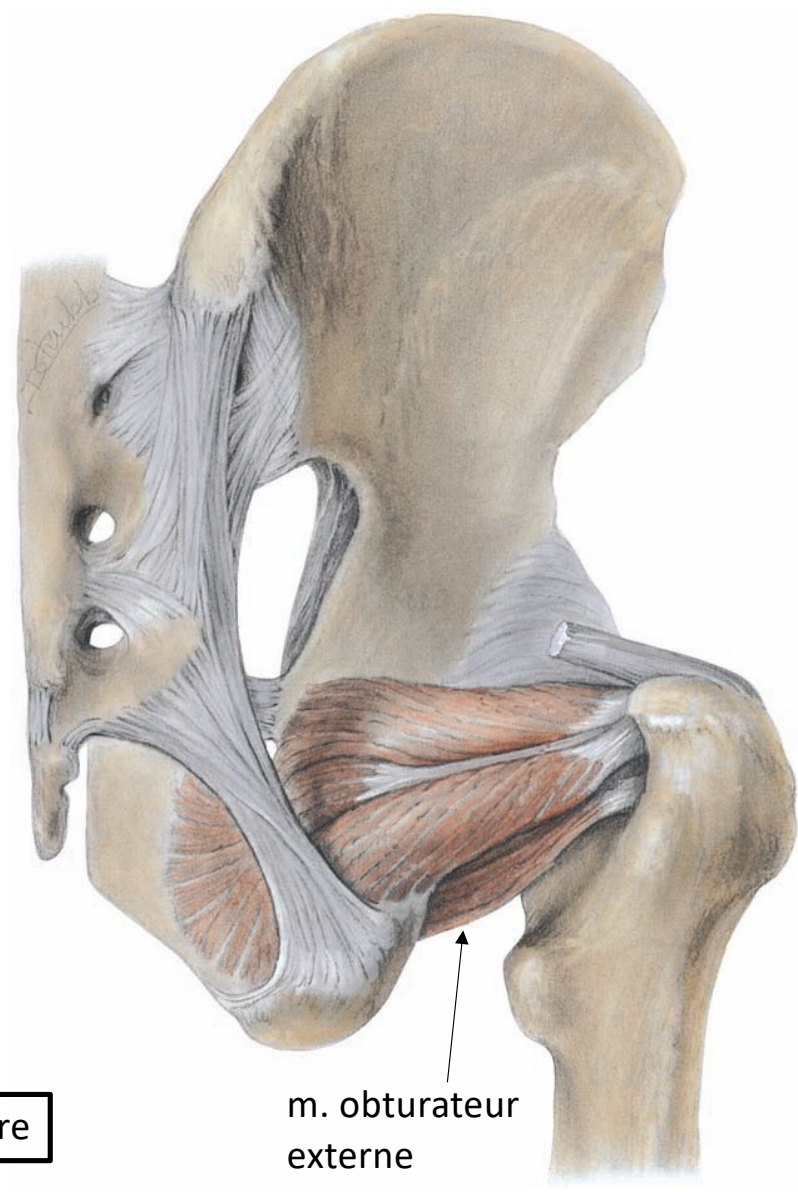
F: Hip joint:
lateral rotation,
extension,
adduction



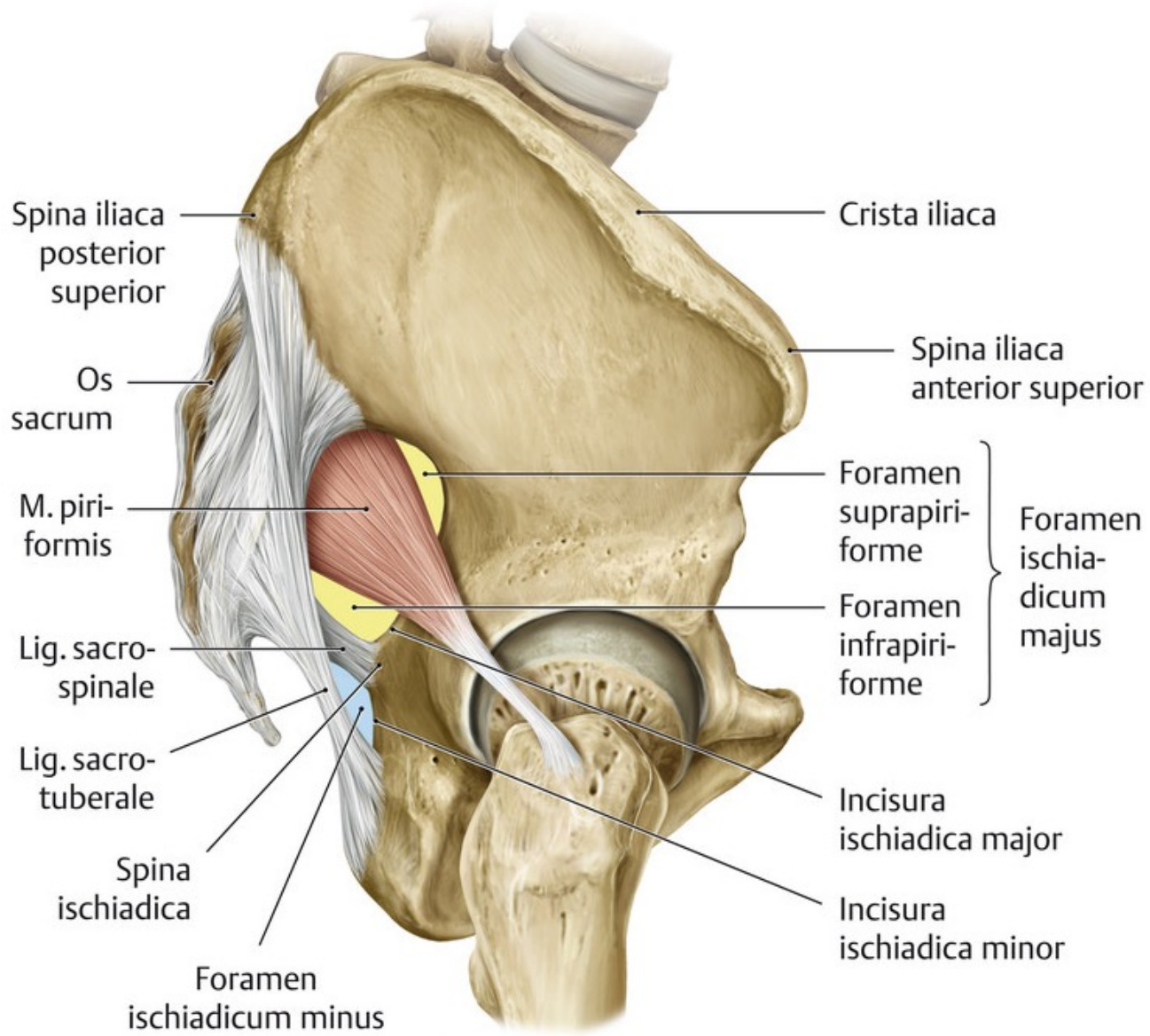
Vue postérieure



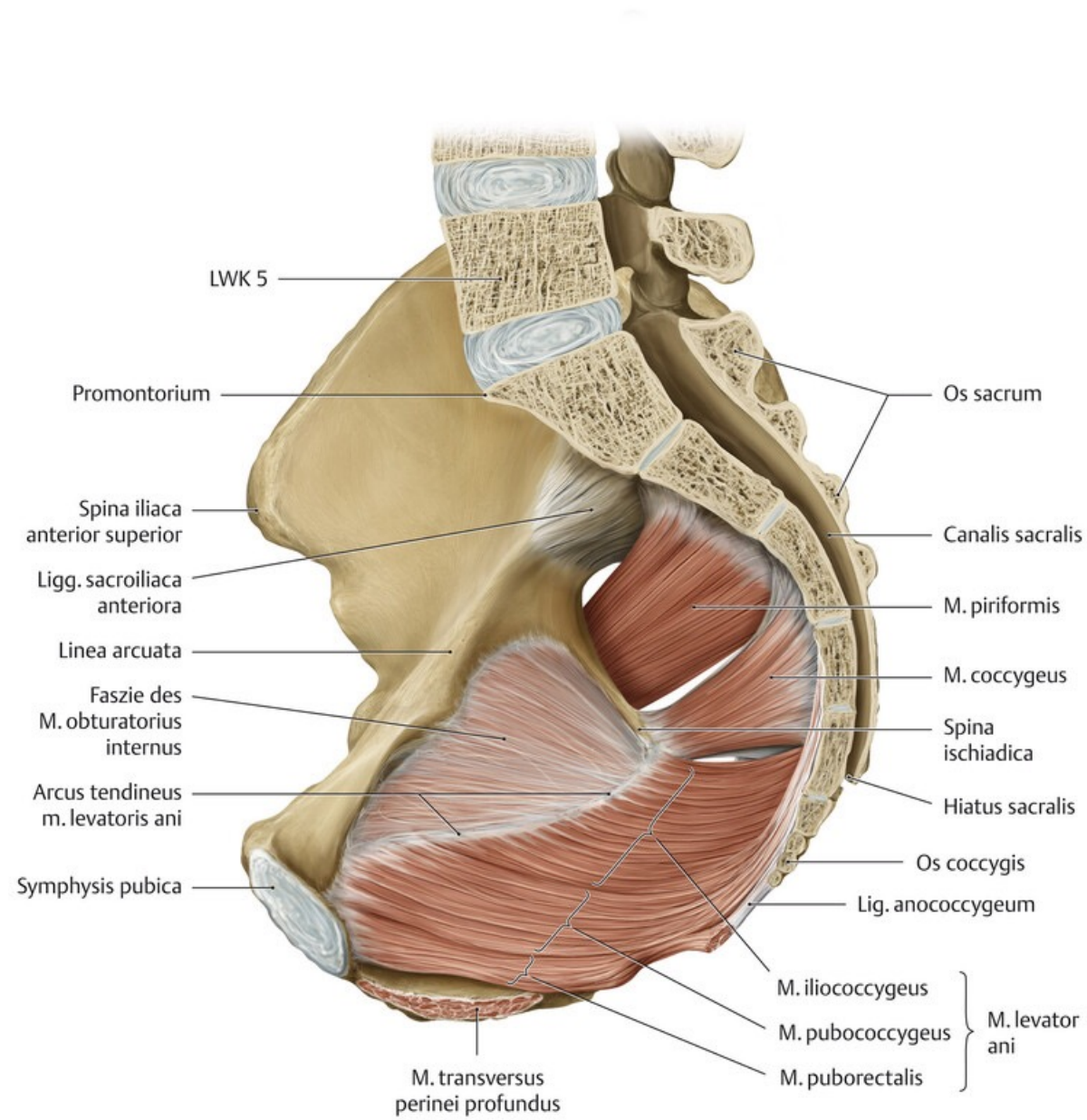
Vue postérieure



Muscle piriforme

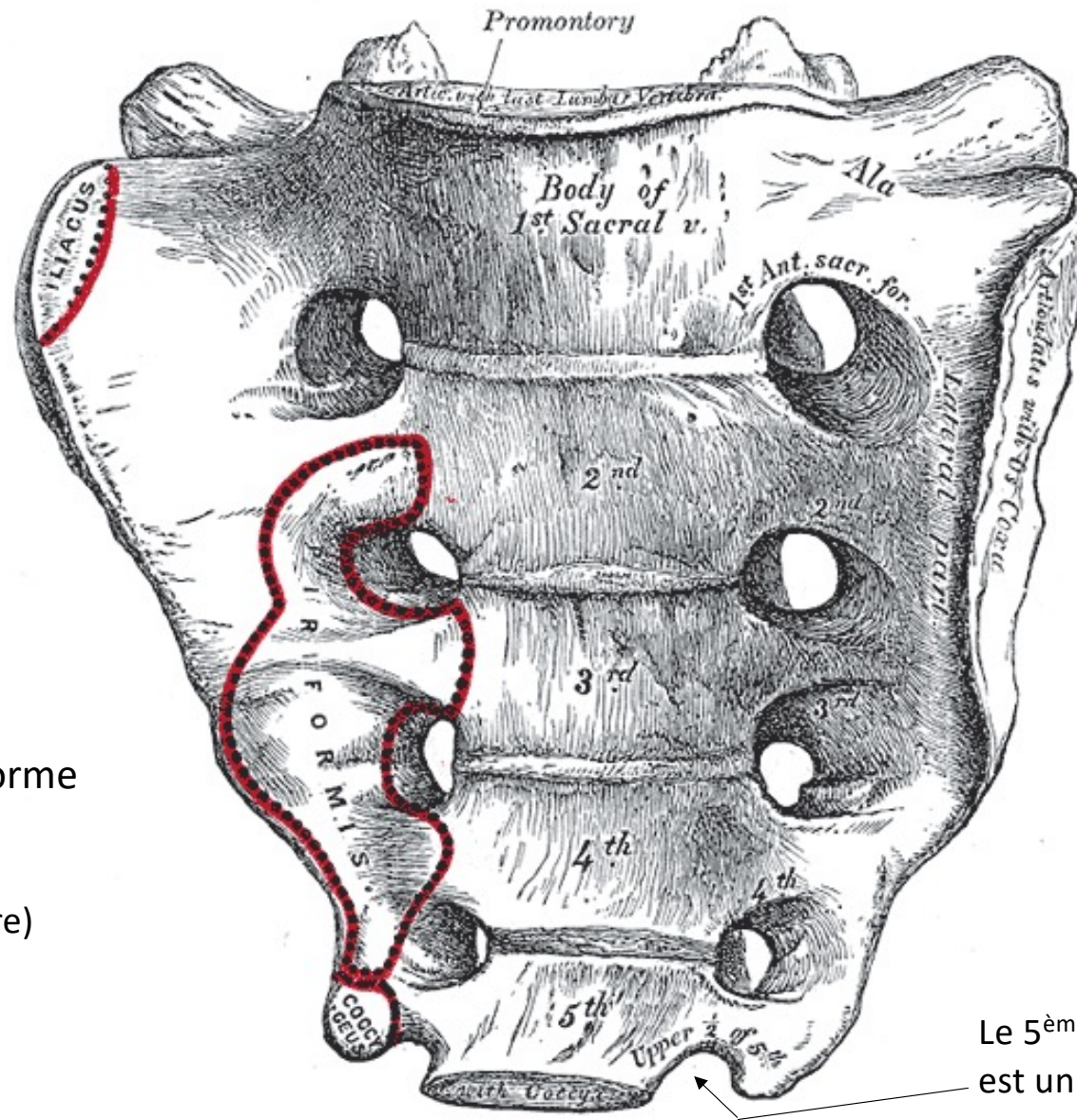


Vue latérale



Sacrum

Face pelvienne



4 foramens sacraux
antérieurs

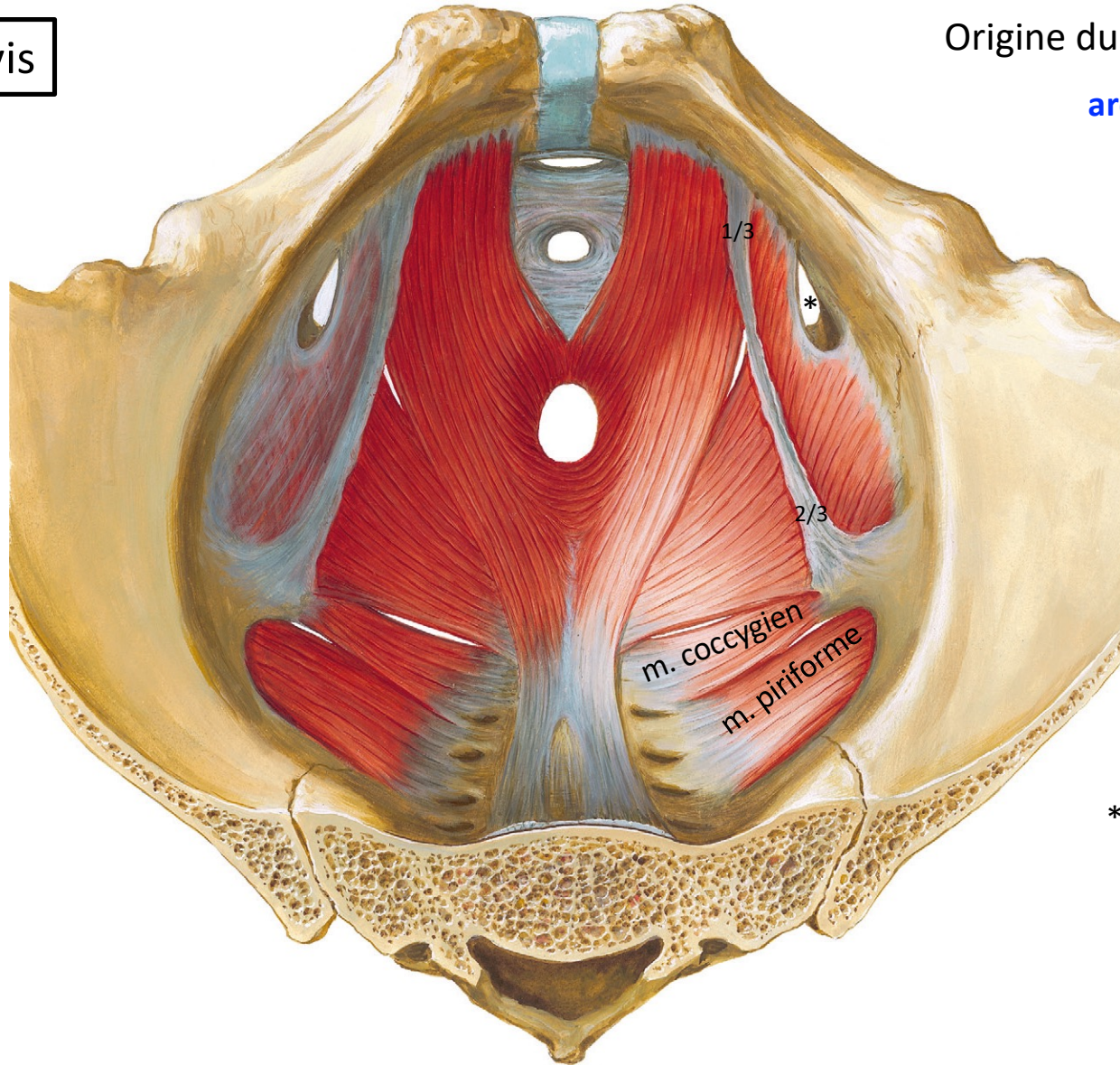
origine du m. piriforme

(= en forme de poire)

Le 5^{ème} foramen sacral
est un demi foramen

Plancher du pelvis

Vue supérieure



Origine du **m. élévateur de l'anus**

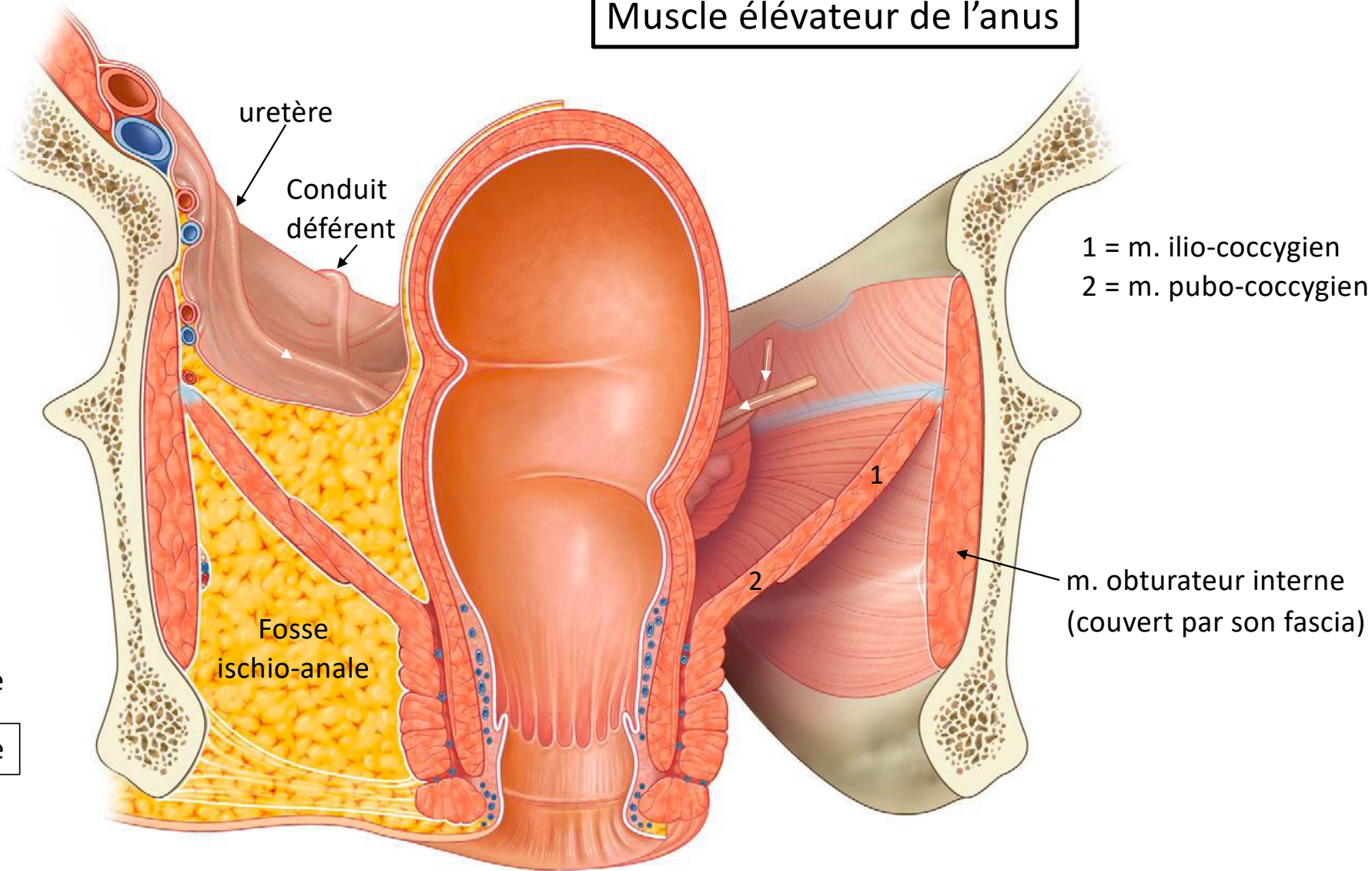
arcade tendineuse :

1/3 antérieur : fibres du
pubo-coccygien

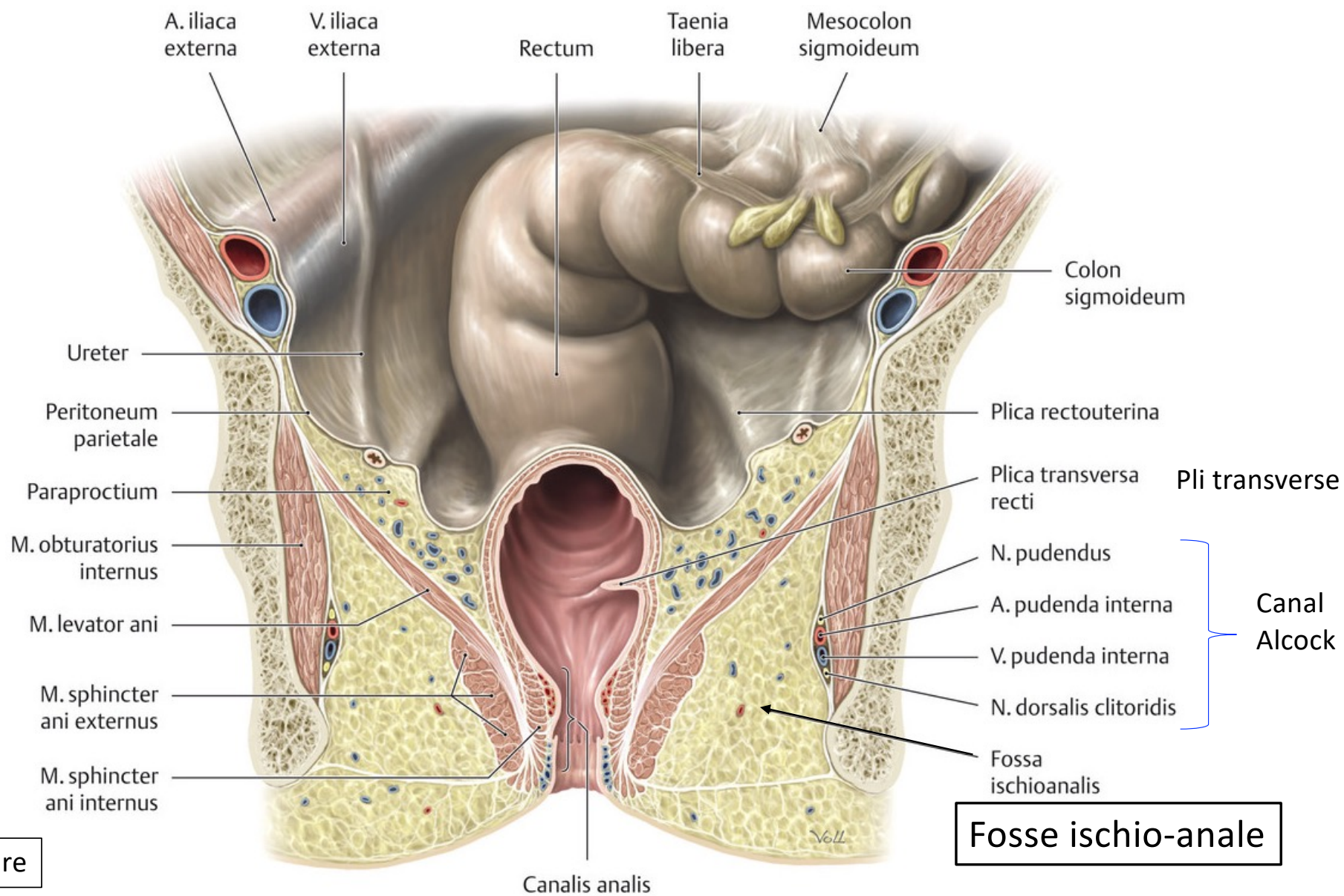
2/3 postérieurs : fibres de
l'ilio-coccygien

* canal du foramen obturé

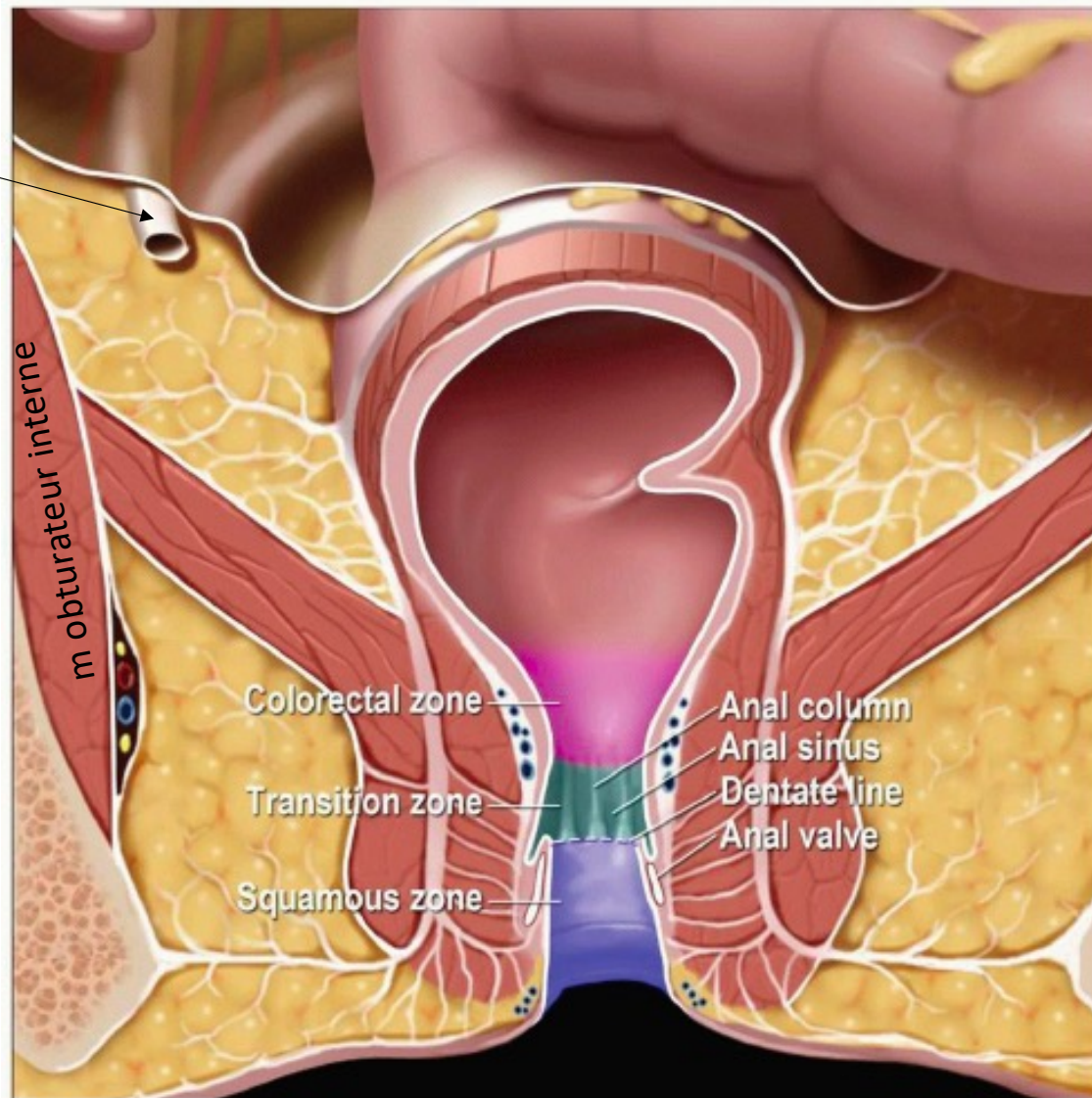
Muscle élévateur de l'anus



Coupe coronale
Vue postérieure



uretère

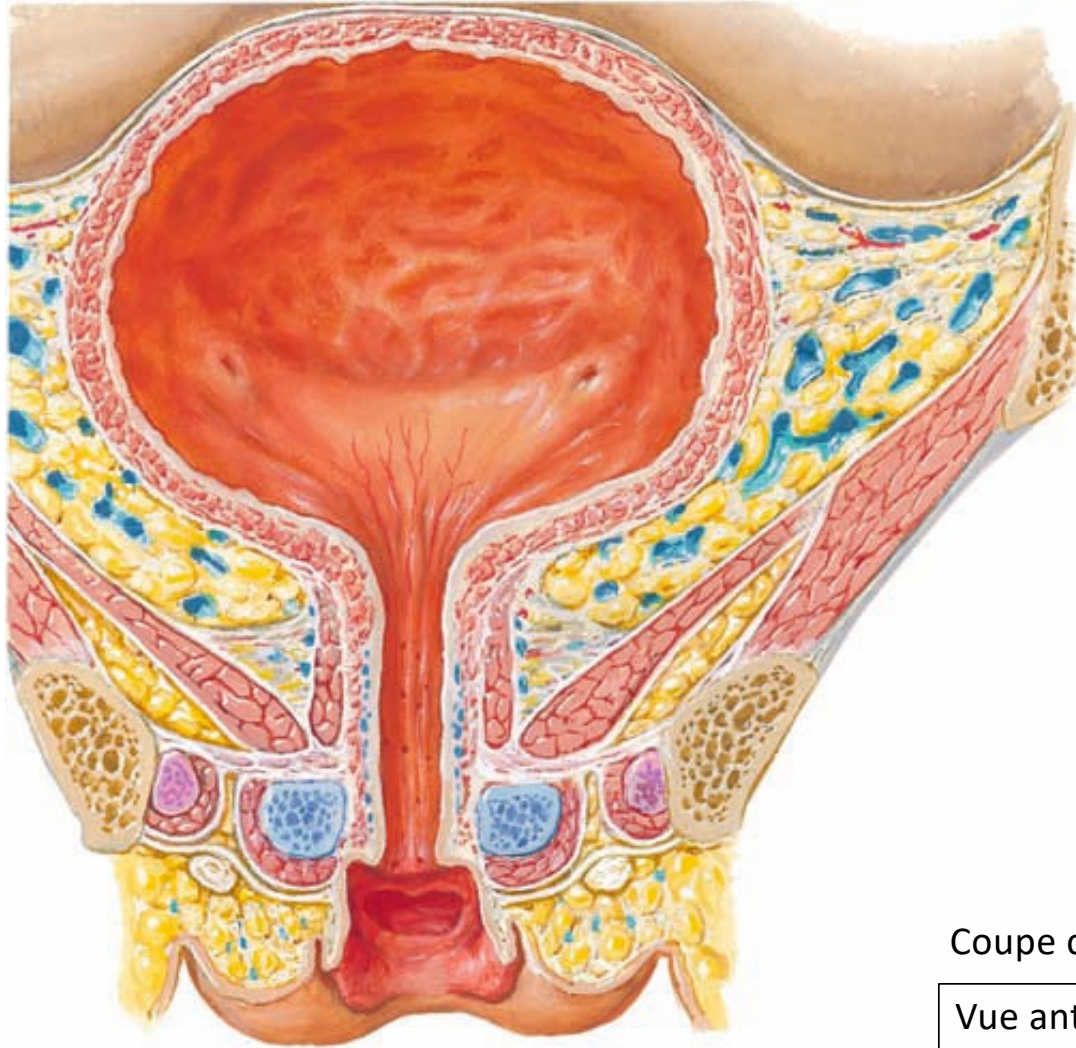


Benjamin Alcock
(1801 - ?)

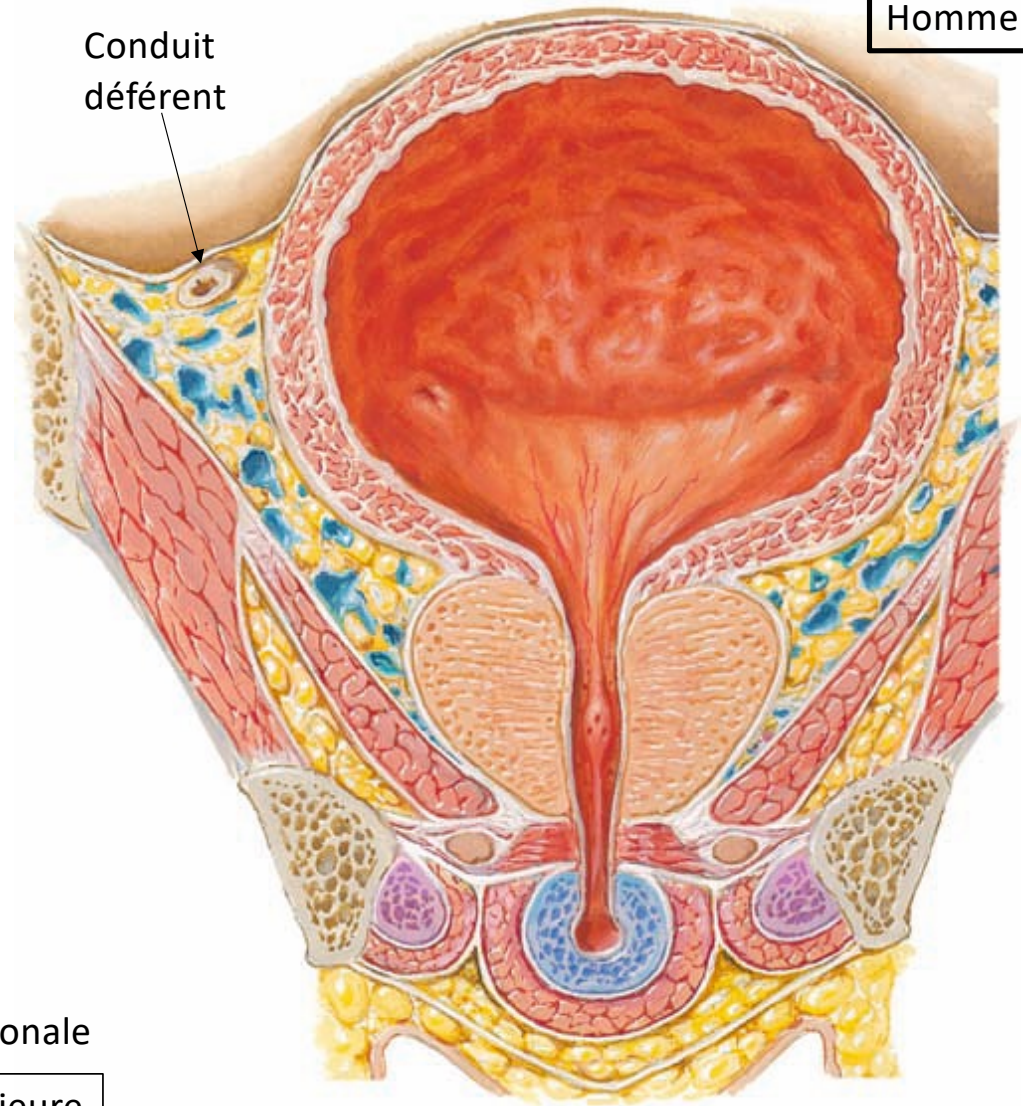
Canal d'Alcock
(canalis pudendalis)

Fosse ischio-anale

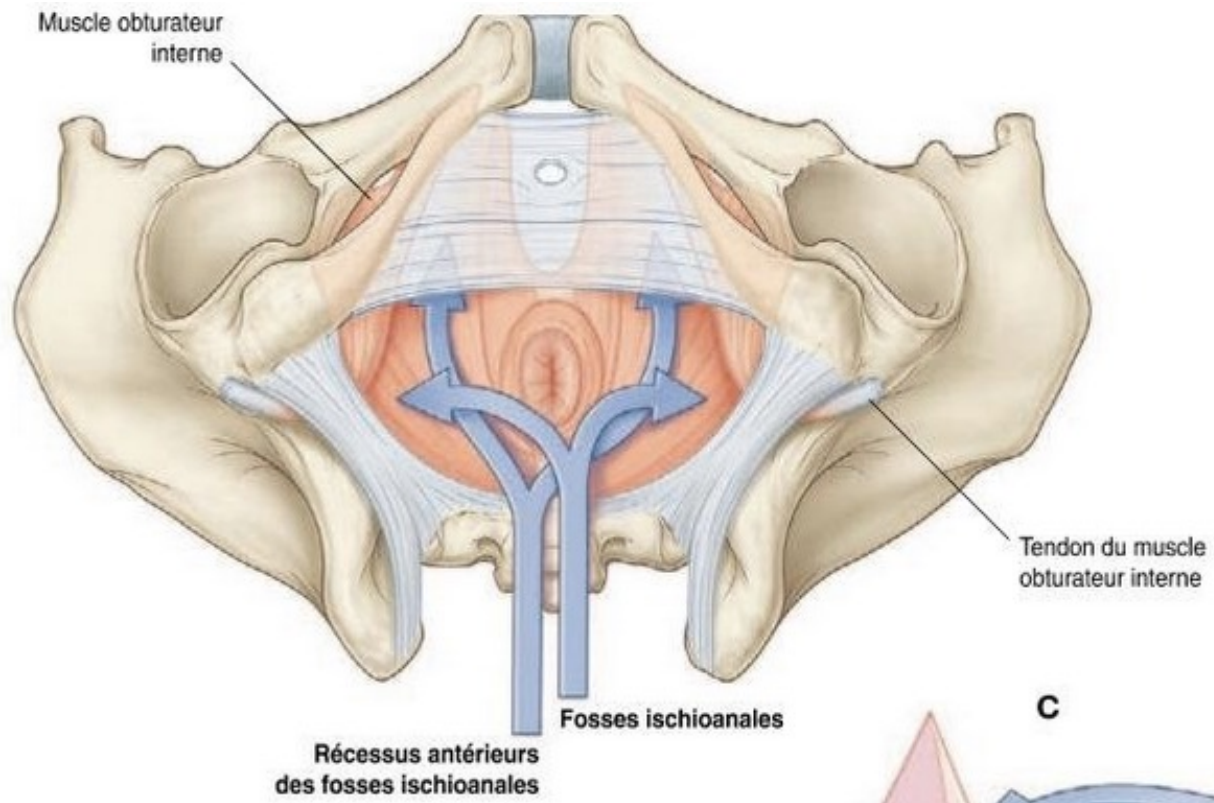
Femme



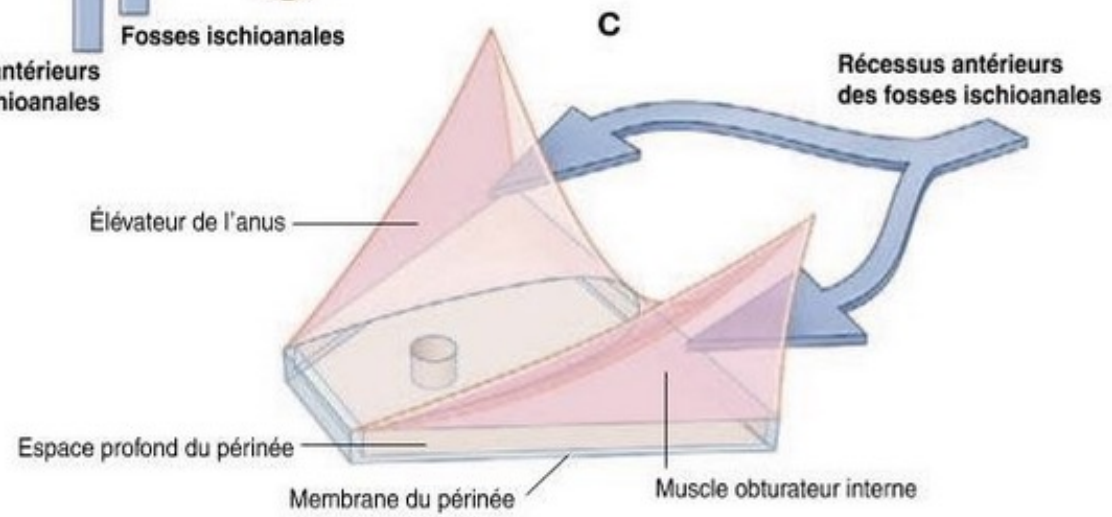
Homme

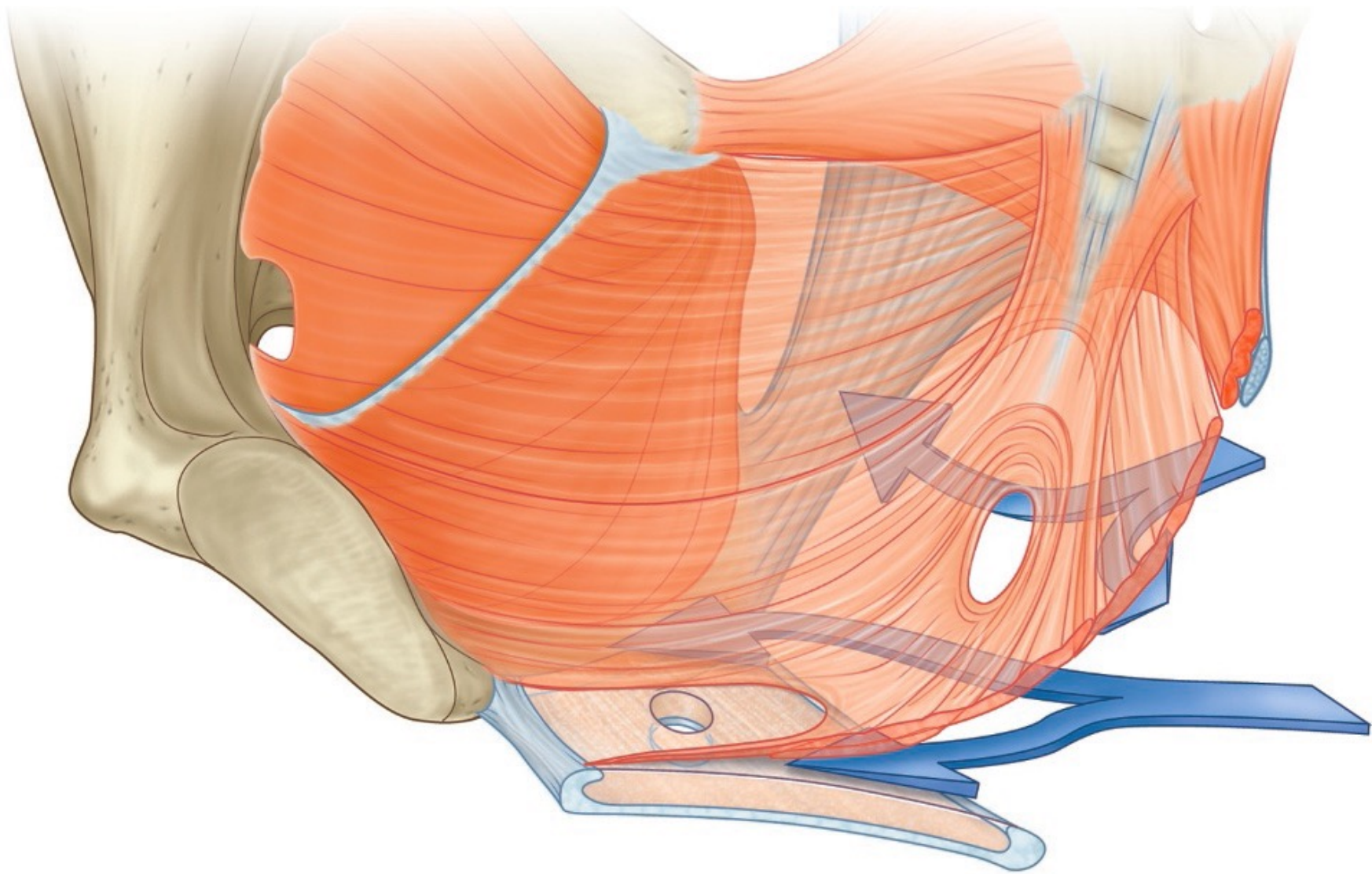


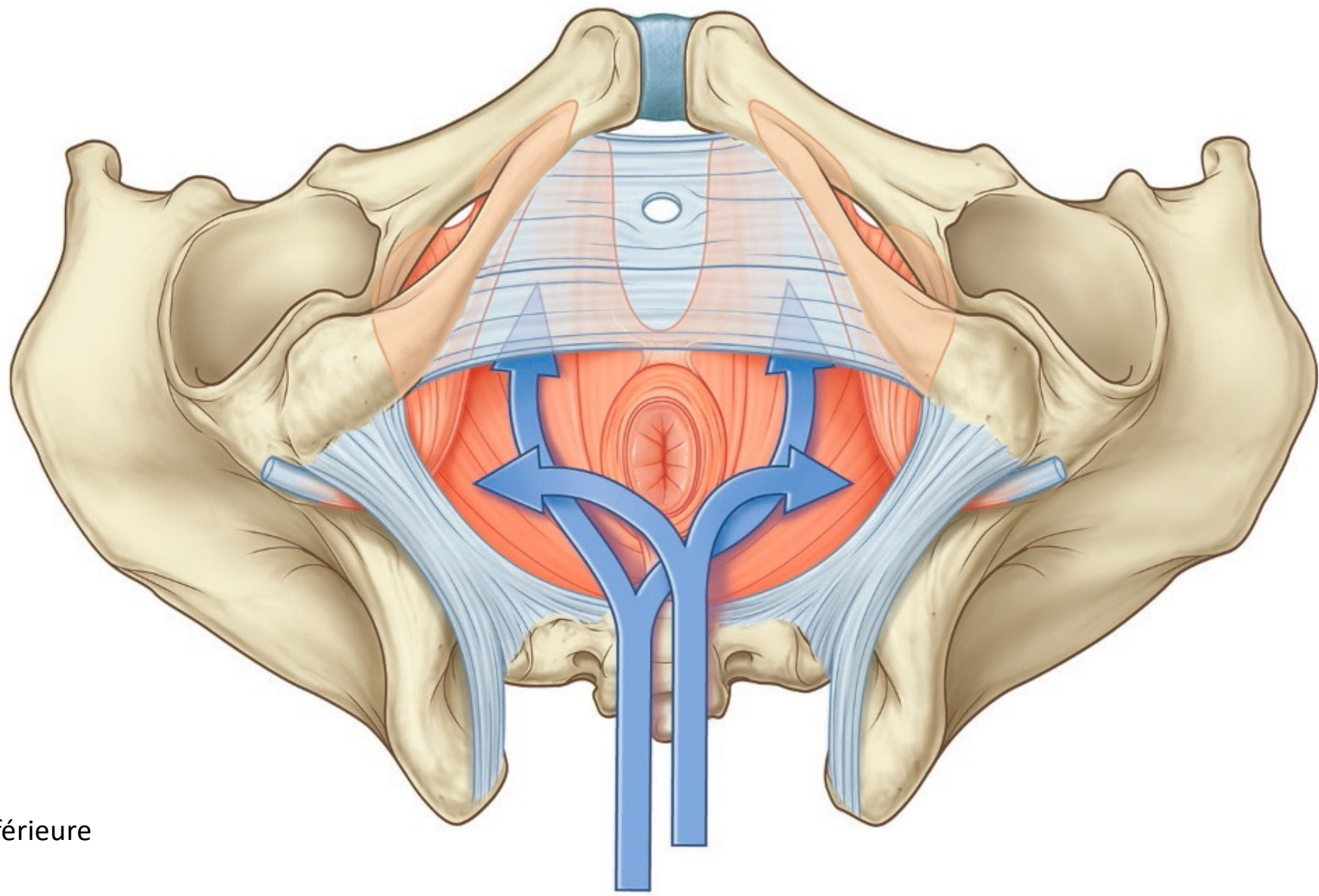
Coupe coronale
Vue antérieure



Fosses ischioanales

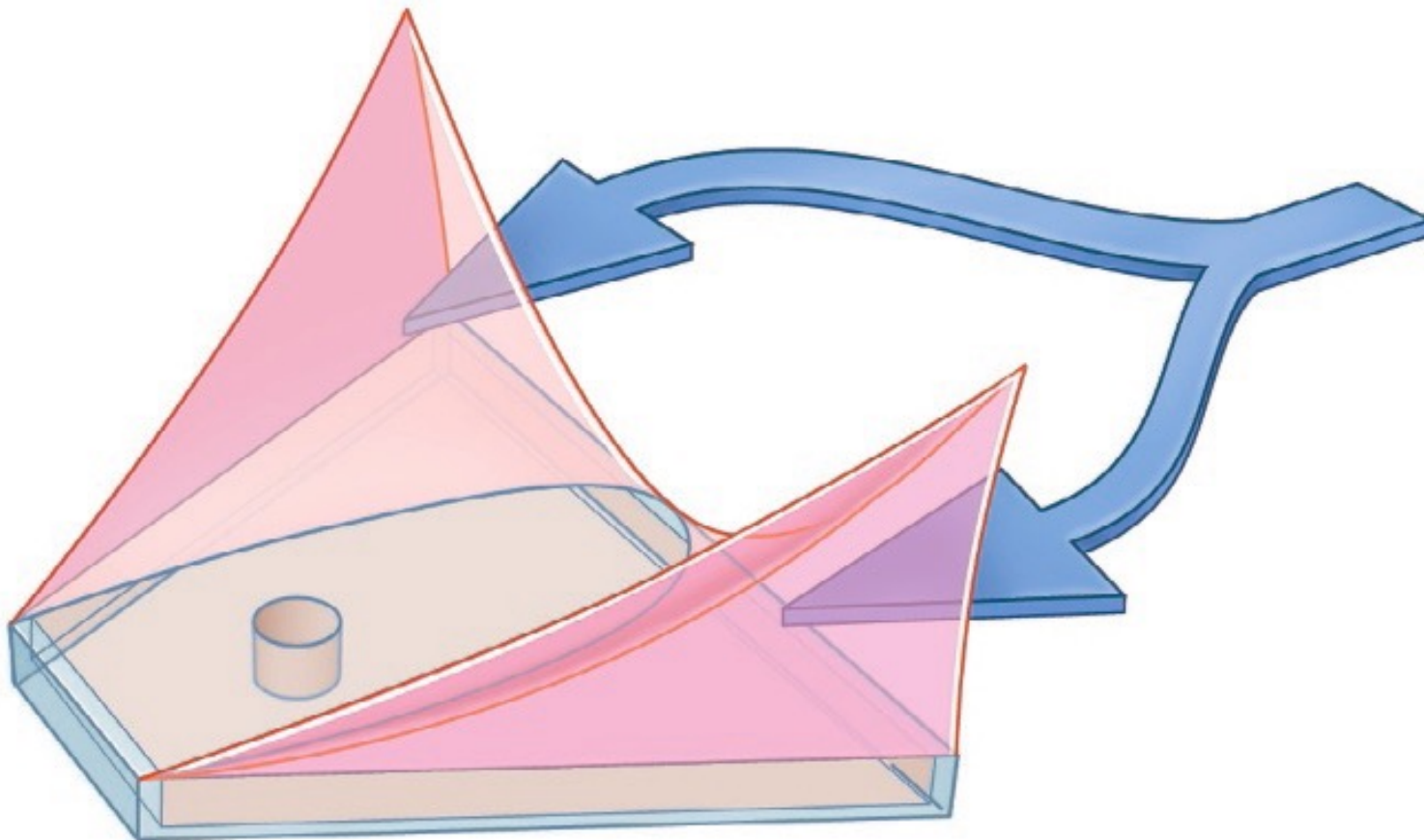






Vue inférieure

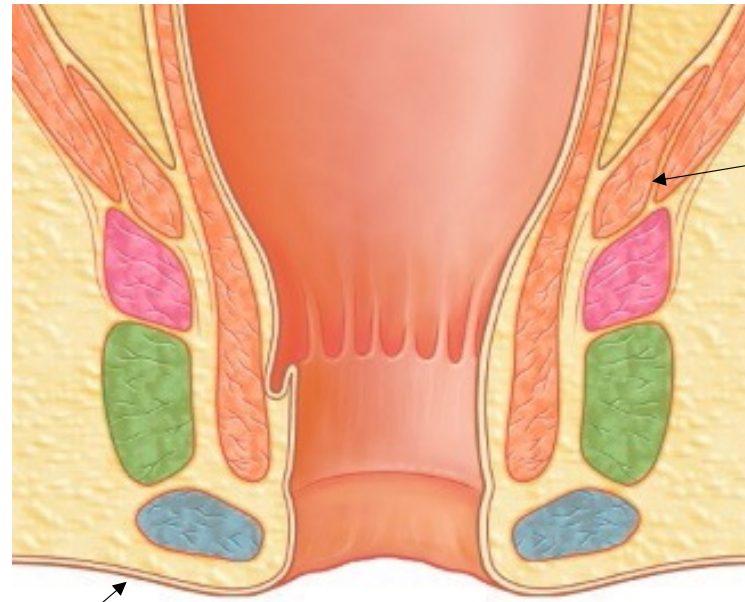
Les fosses ischioanales et leurs récessus antérieurs



Le muscle sphincter externe de l'anus

muscle strié

tunique musculuse du rectum



Muscle élévateur de l'anus

partie profonde

partie superficielle

partie sous-cutanée

peau

Le canal anal
n'est pas une partie du rectum,
c'est un segment en soi.



Où est la limite peau / muqueuse

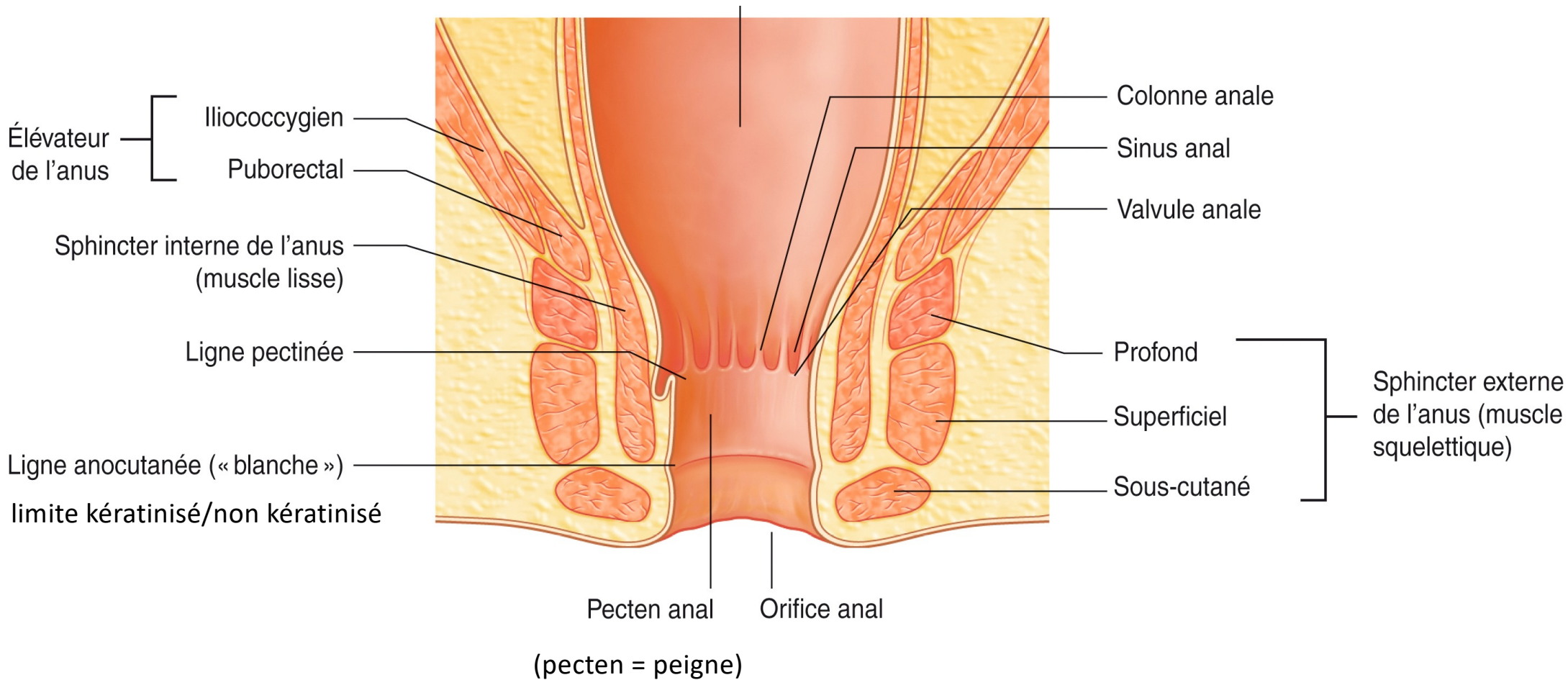
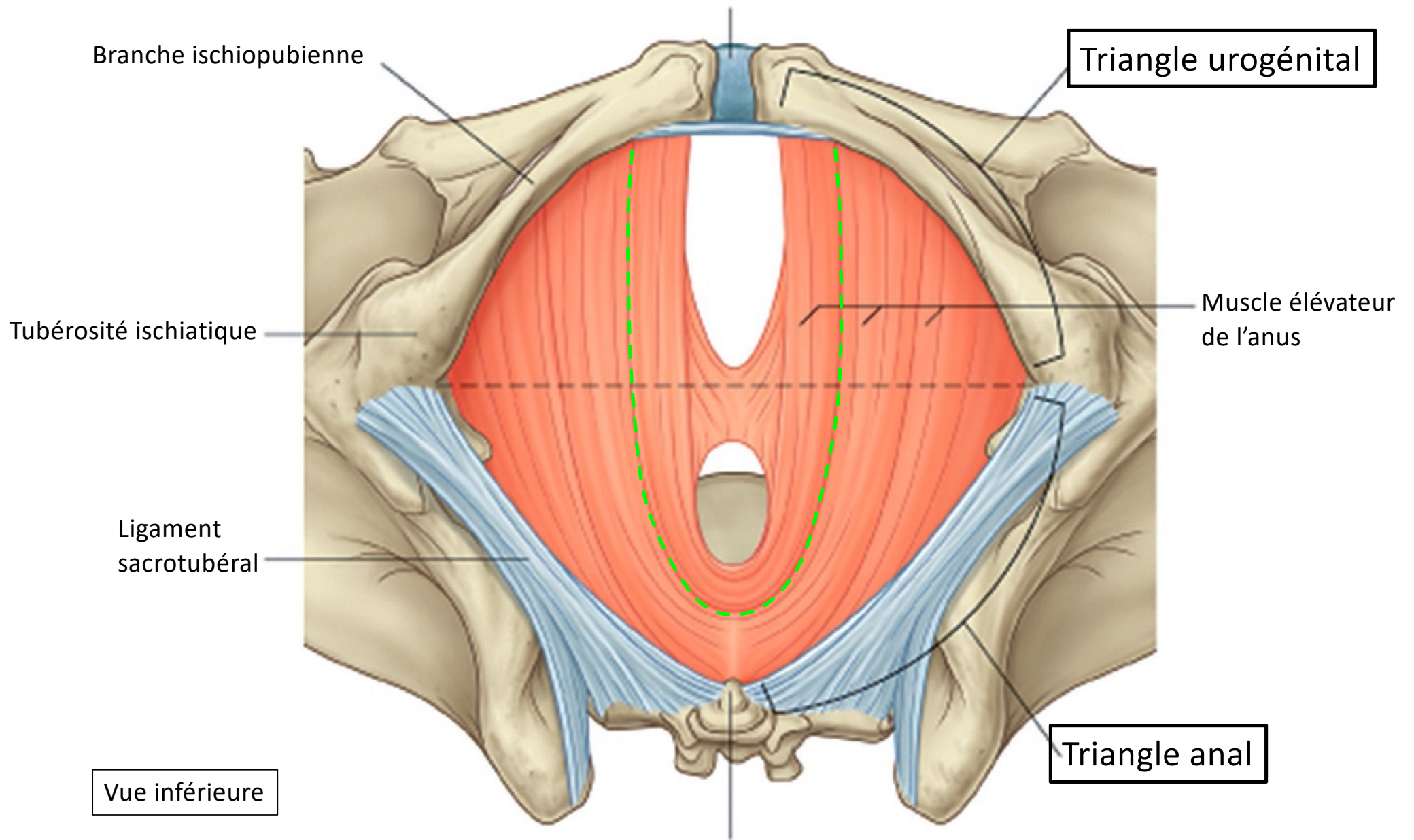


Tableau 5.5 Muscles du triangle anal.

Muscle	Origine	Terminaison	Innervation	Fonction
SPHINCTER ANAL EXTERNE				
Partie profonde	Entoure la partie supérieure du canal anal		Nerf pudendal (S2 et S3) et des rameaux de S4	Ferme le canal anal
Partie superficielle	Entoure la partie inférieure du canal anal	Amarrée au centre tendineux du périnée et ligament anococcygien		
Partie sous-cutanée	Entoure l'orifice anal			

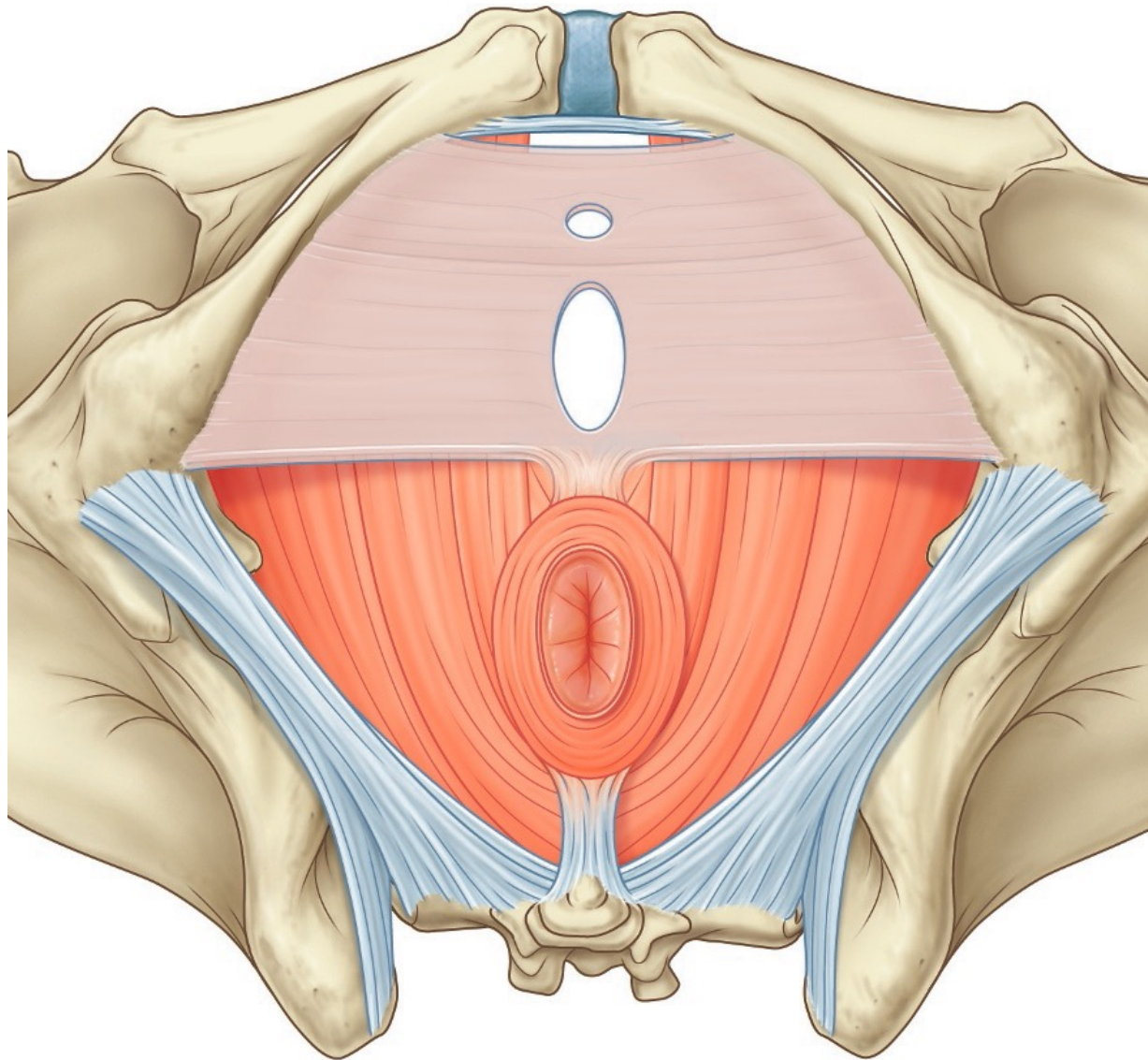


On décrit :

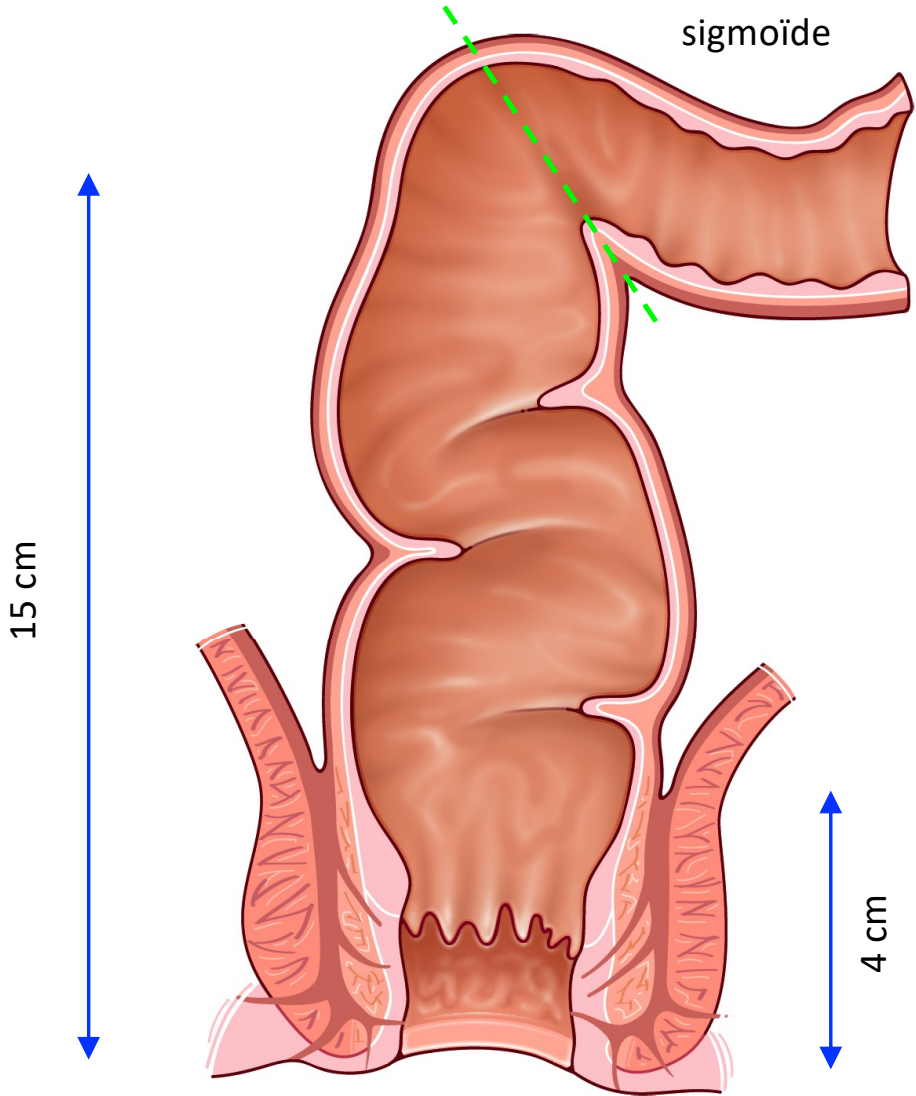
3 plans pour
le périnée antérieur
(triangle uro-génital)

2 plans pour
le périnée postérieur
(triangle anal)

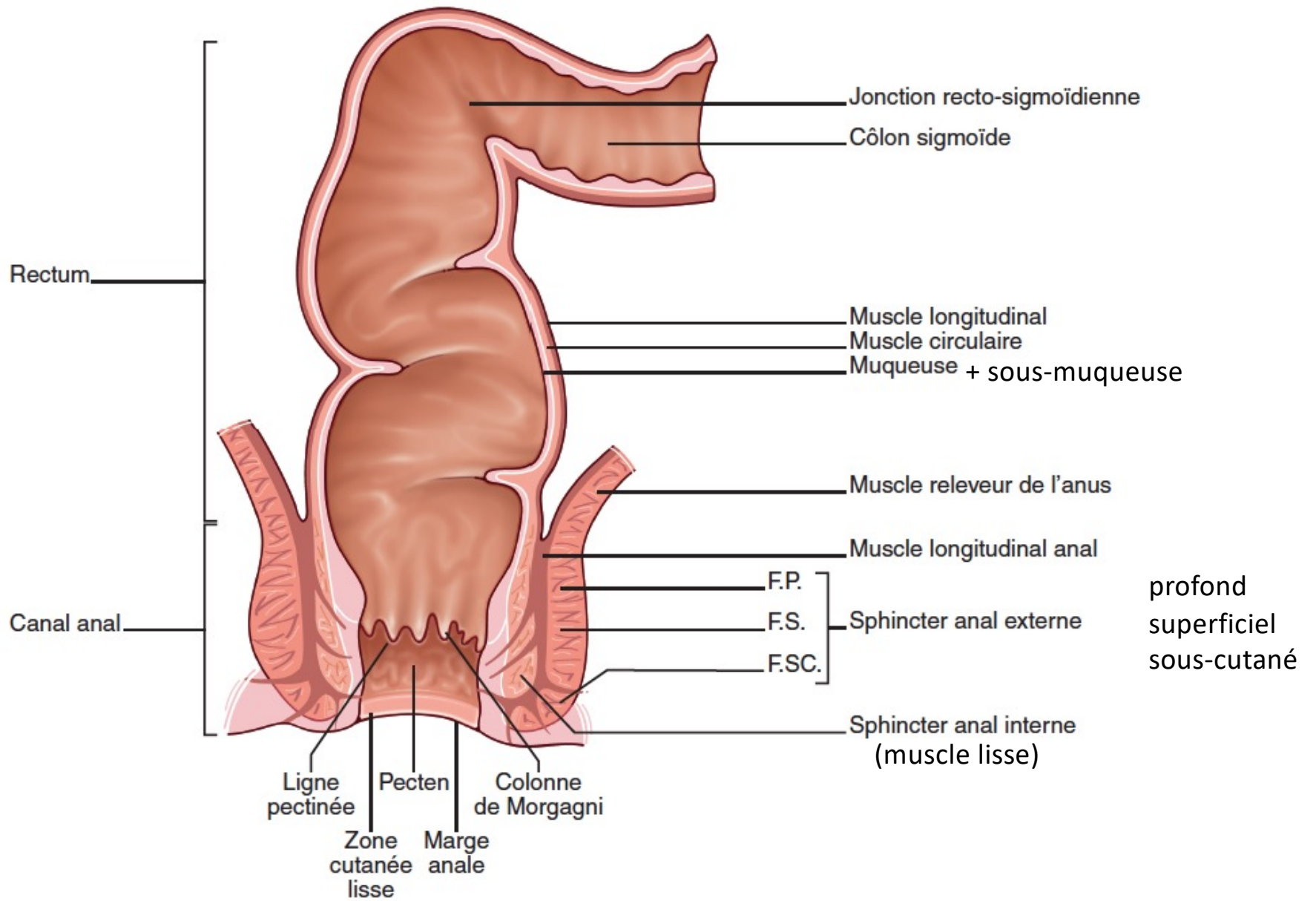
femme



Rectum et canal anal



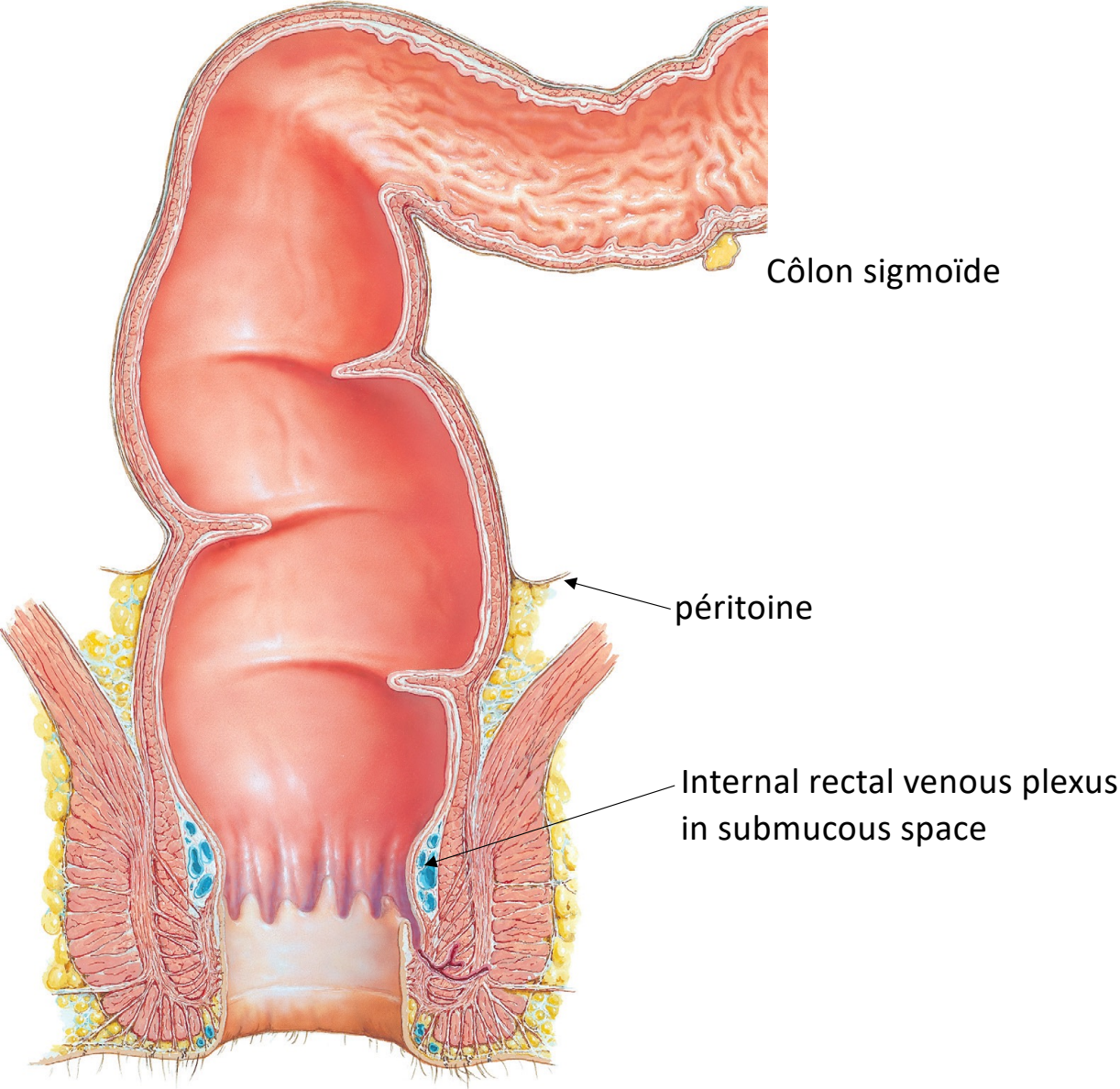
Canal anal

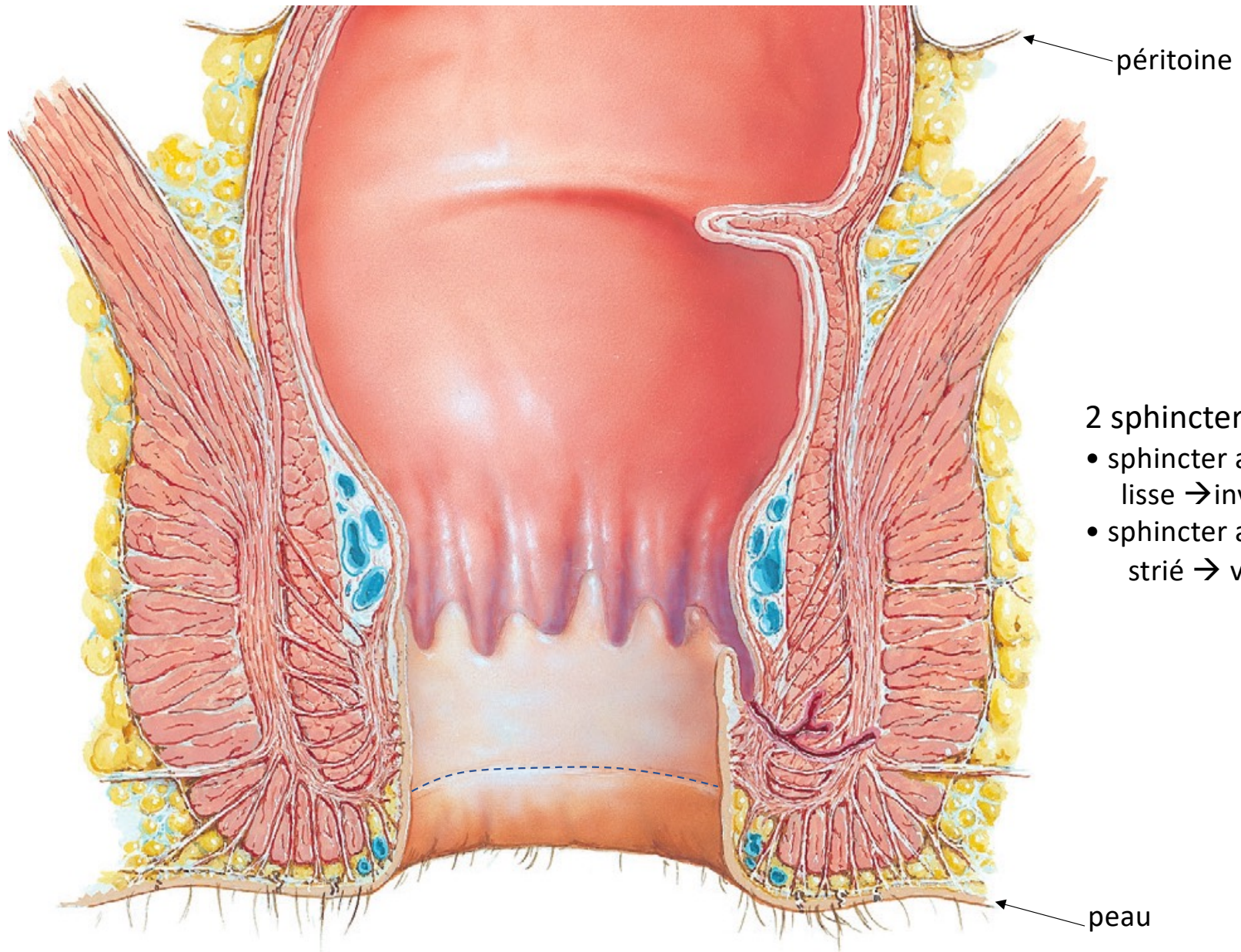


Rectum

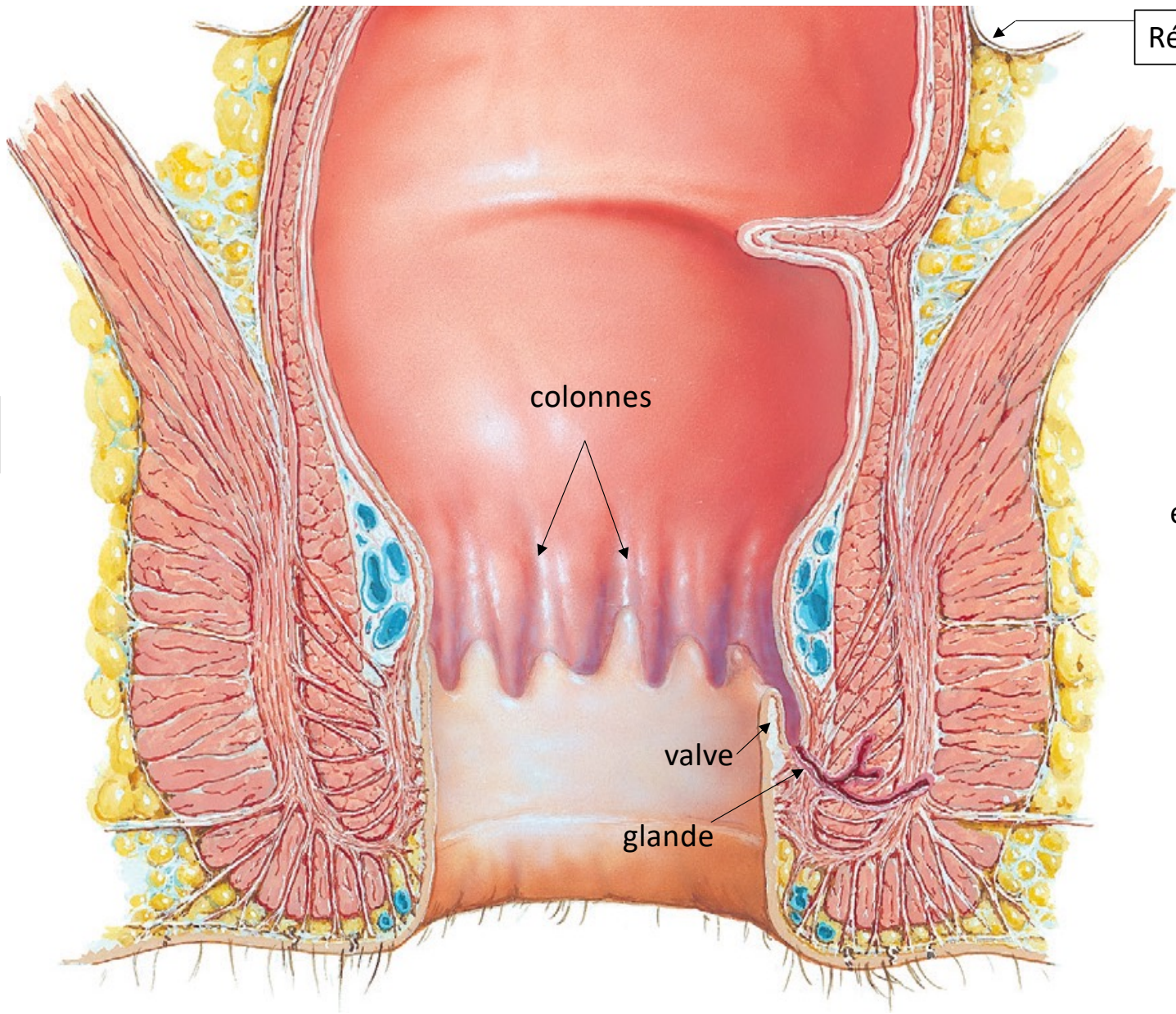
- 3 plis transverses
- supérieur
 - moyen
 - inférieur

Canal anal





Canal anal



Réflexion du péritoine

colonnes

entre 2 colonnes :
un sinus

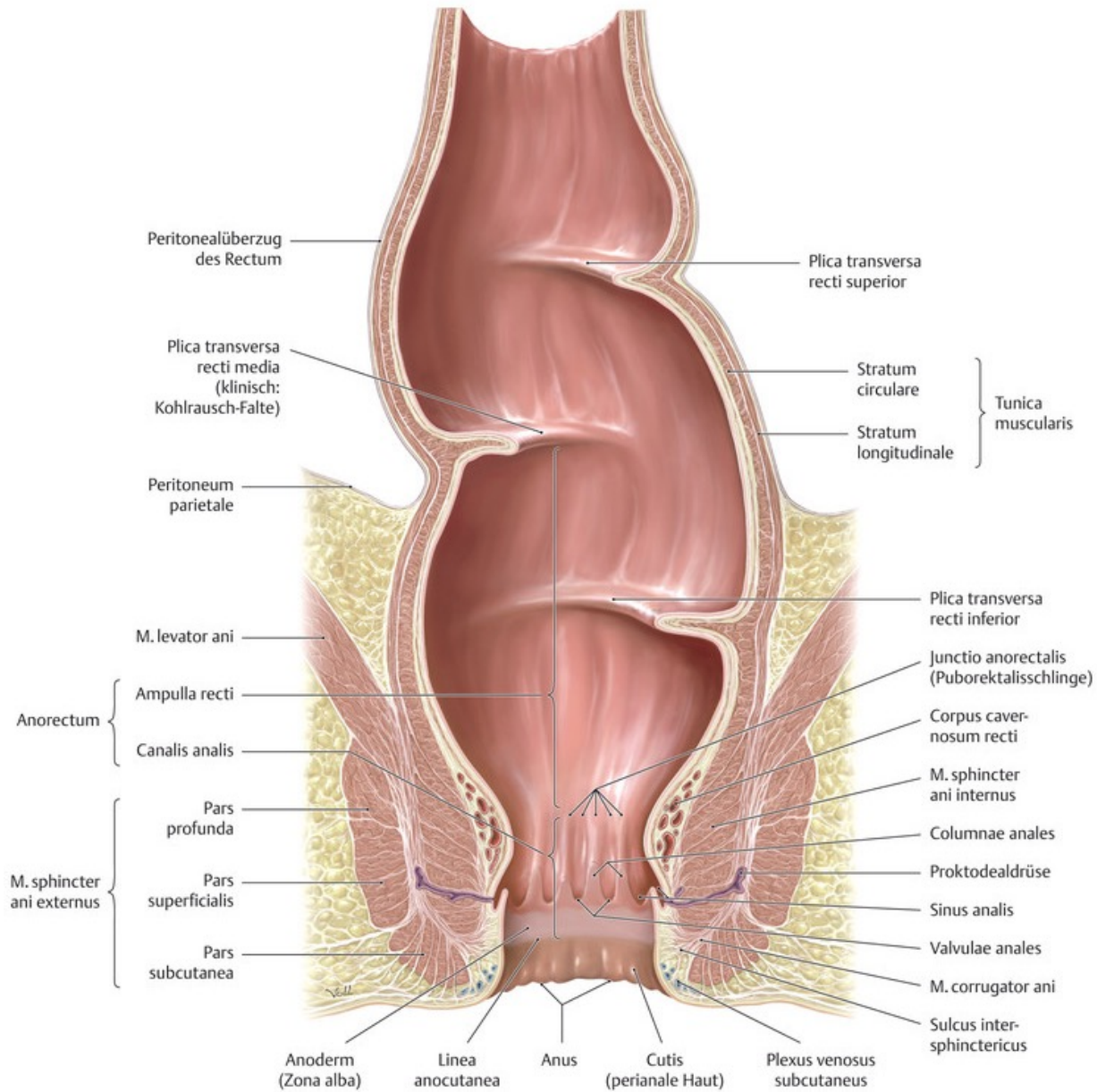
valve

glande

Rectum

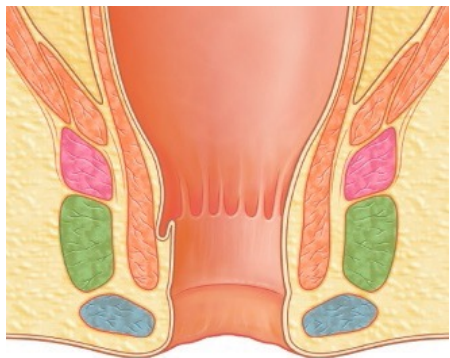
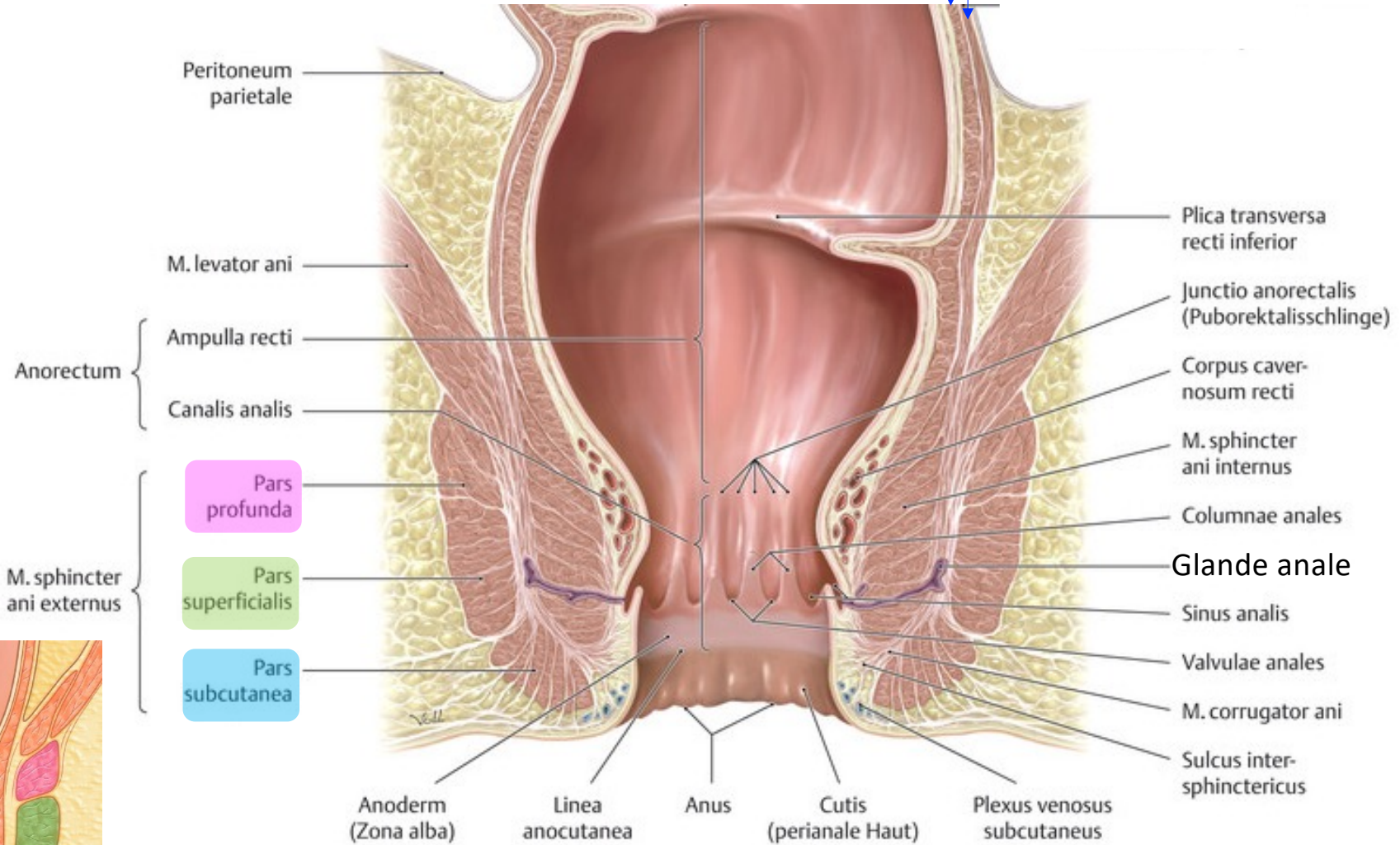
3 plis transverses

- supérieur
- moyen
- inférieur

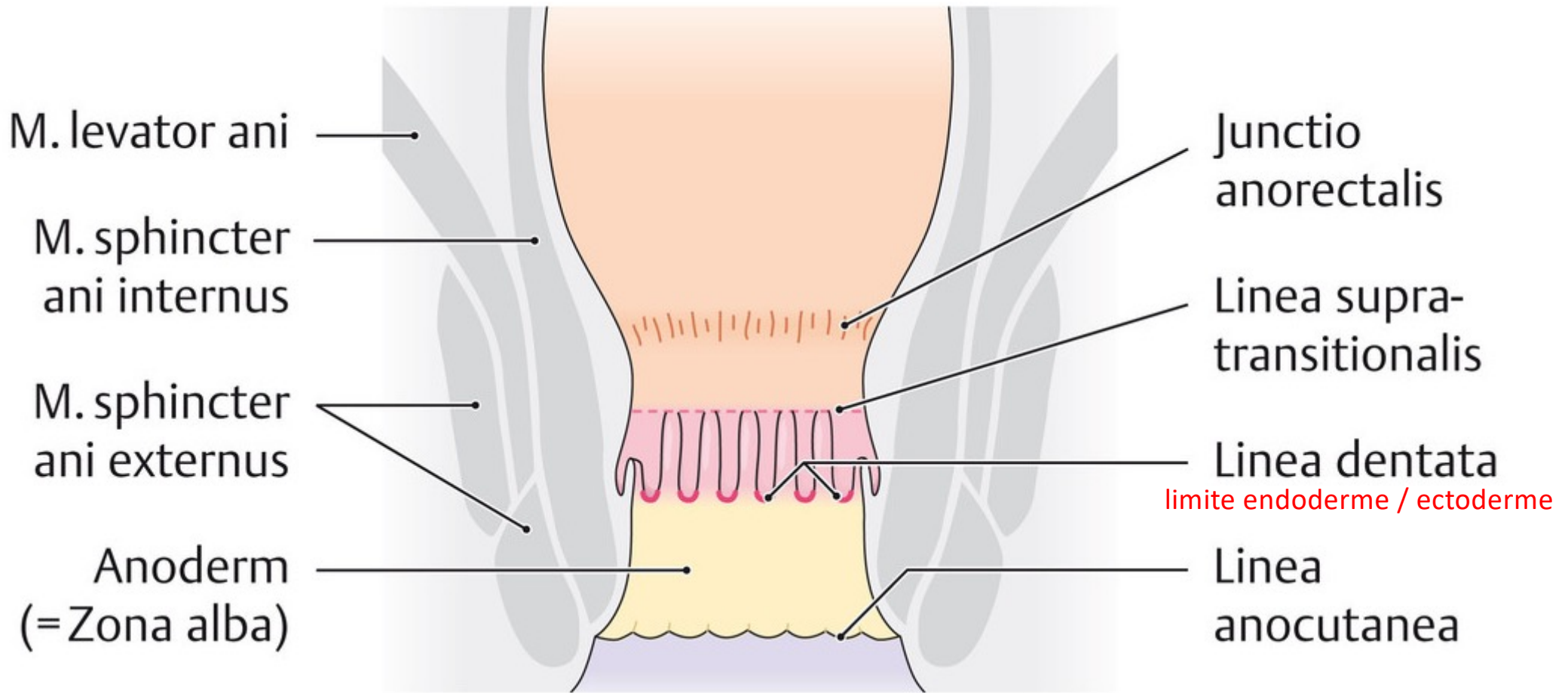


Rectum

circulaire interne longitudinale externe



épithélium stratifié
non kératinisé



Zona colorectalis



Zona transitionalis



Zona squamosa



Peau péri-anale (kératinisée)

FIGURE 17.31 ▲ Drawing of the rectum and anal canal.

The rectum and anal canal are the terminal portions of the large intestine. They are lined by the colorectal mucosa that possesses a simple columnar epithelium containing mostly goblet cells and numerous anal glands. In the anal canal, the simple columnar epithelium undergoes transition into a stratified columnar (or cuboidal) epithelium and then to a stratified squamous epithelium. This transition occurs in the area referred to as the anal **transitional zone**, which occupies the middle third of the anal canal between the **colorectal zone** and the **squamous zone** of the perianal skin.

Le canal anal est subdivisé
en trois zones

